



MONTHLY MEMBERSHIP PROGRESS REPORT

District 5 NE

Results as of: 4/30/2016

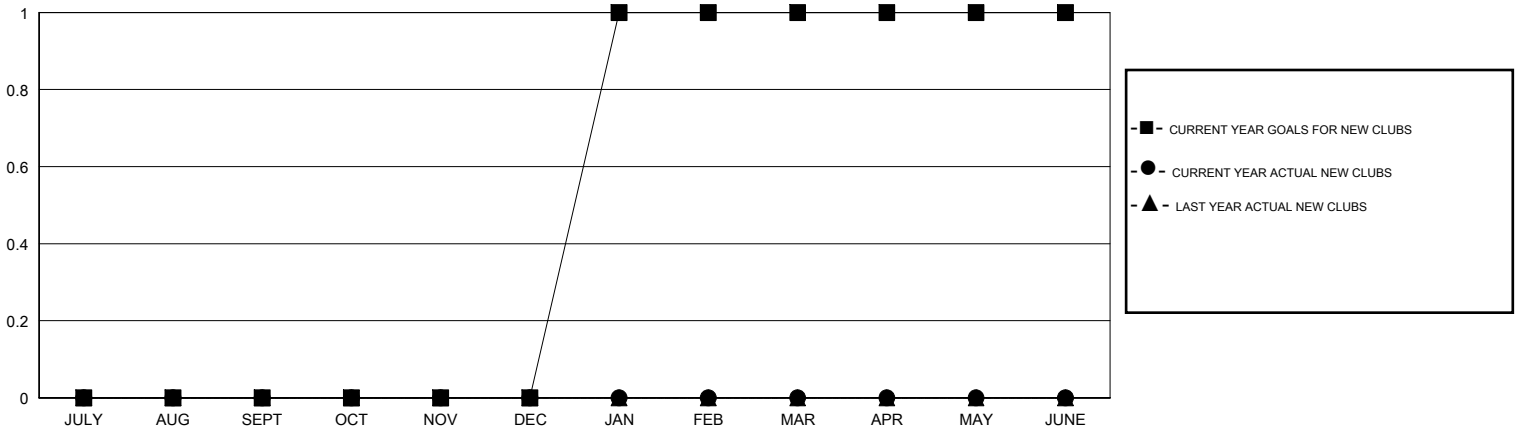
GMT: Judy Hankom

LOCATION NORTH DAKOTA

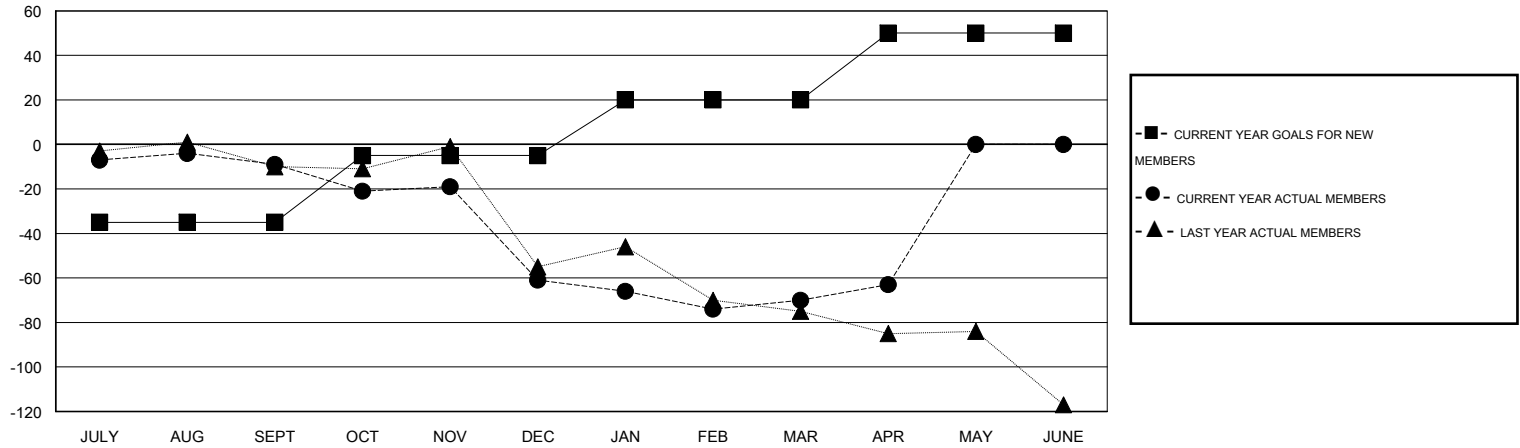
GMT CA 1

| Clubs | | | | | Members | | | | |
|-----------------------|---------------|-----------|---------------|---------------|-----------------------|-----------------|-------------------------------|-----------------|---------------|
| RESULTS FOR 2015-2016 | | | | | RESULTS FOR 2015-2016 | | | | |
| QUARTER | NEW CLUB GOAL | NEW CLUBS | DROPPED CLUBS | NET GAIN/LOSS | QUARTER | NEW MEMBER GOAL | CHARTER AND NEW MEMBERS ADDED | DROPPED MEMBERS | NET GAIN/LOSS |
| JULY/AUG/SEPT | 0 | 0 | 0 | 0 | JULY/AUG/SEPT | -35 | 20 | 29 | -9 |
| OCT/NOV/DEC | 0 | 0 | 1 | -1 | OCT/NOV/DEC | 30 | 34 | 86 | -52 |
| JAN/FEB/MAR | 1 | 0 | 0 | 0 | JAN/FEB/MAR | 25 | 26 | 35 | -9 |
| APR/MAY/JUNE | 0 | 0 | 0 | 0 | APR/MAY/JUNE | 30 | 13 | 6 | 7 |

GOALS AND ACTUAL NEW CLUBS CUMULATIVE



GOALS AND ACTUAL MEMBERS CUMULATIVE



| | | |
|--|---|---|
| DROPPED CLUBS: 1 | 34 CLUBS OF 55 ADDED 1 OR MORE NEW MEMBERS | GENDER DISTRIBUTION MALE 1,006 (75.47%) FEMALE 327 (24.53%) |
| DROPPED MEMBERS DECEASED 16 CLUB CANCELLED 11 OTHER 129 TOTAL 156 | CLICK HERE FOR HEALTH ASSESSMENT DATA | FAMILY UNIT MEMBERS 144 HEAD OF HOUSEHOLD 72 NON-HEAD OF HOUSEHOLD 72 |